





Catalina Le Pera





# Partes del objetivo:



Anillo de enfoque



Anillo de enfoque

Anillo de diafragma



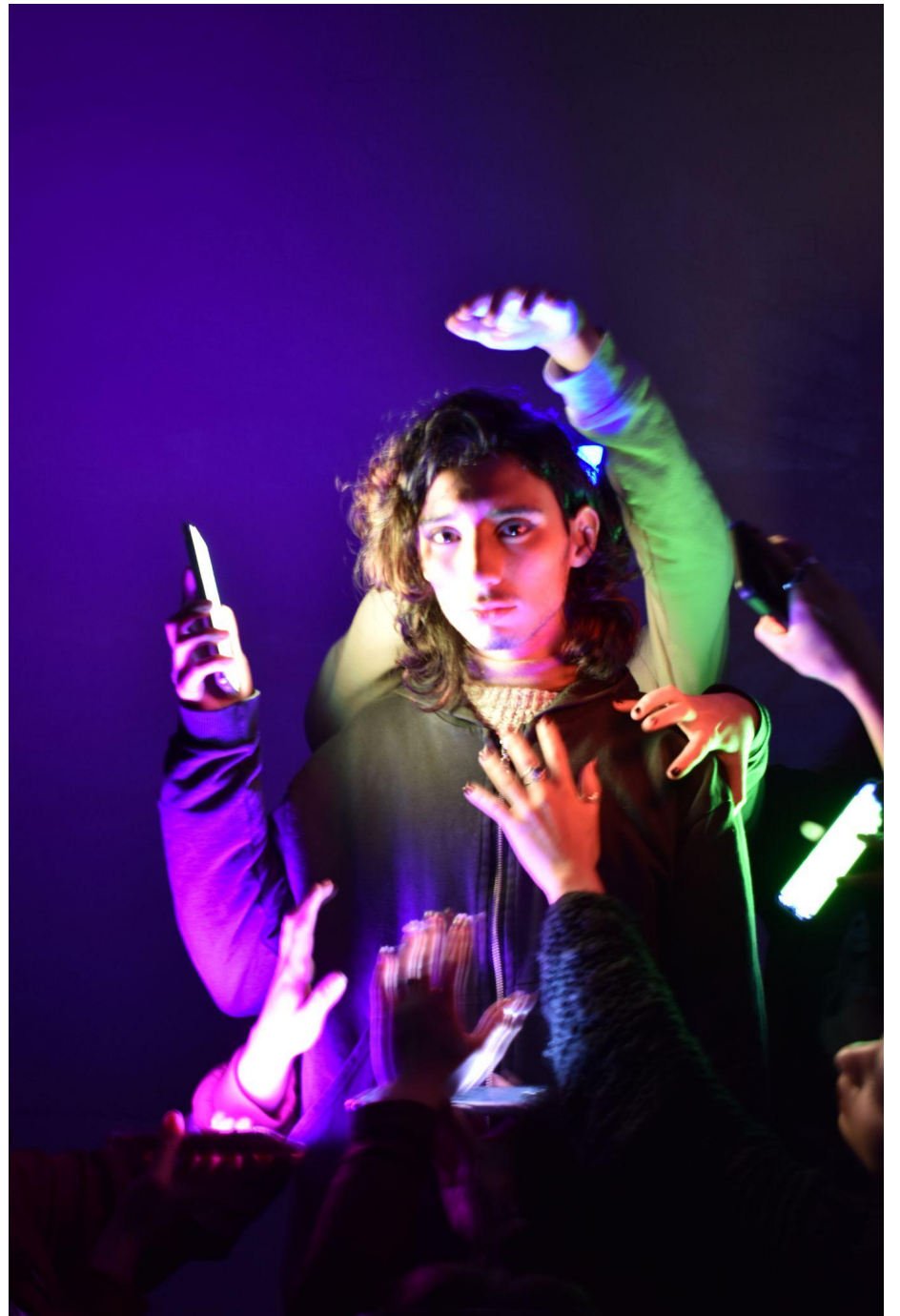
Anillo de enfoque

Anillo de zoom



Anillo de diafragma







A horizontal rectangular box containing a scale with three markers: a minus sign (-) on the left, a zero (0) in the center, and a plus sign (+) on the right. A vertical line representing the needle is positioned exactly at the zero mark.

- . 0 . +

Exposición adecuada:

El exposímetro está en "0"

A horizontal rectangular box containing a scale with three markers: a minus sign (-) on the left, a zero (0) in the center, and a plus sign (+) on the right. A vertical line representing the needle is positioned to the left of the zero mark, closer to the minus sign.

- . 0 . +

Subexposición:

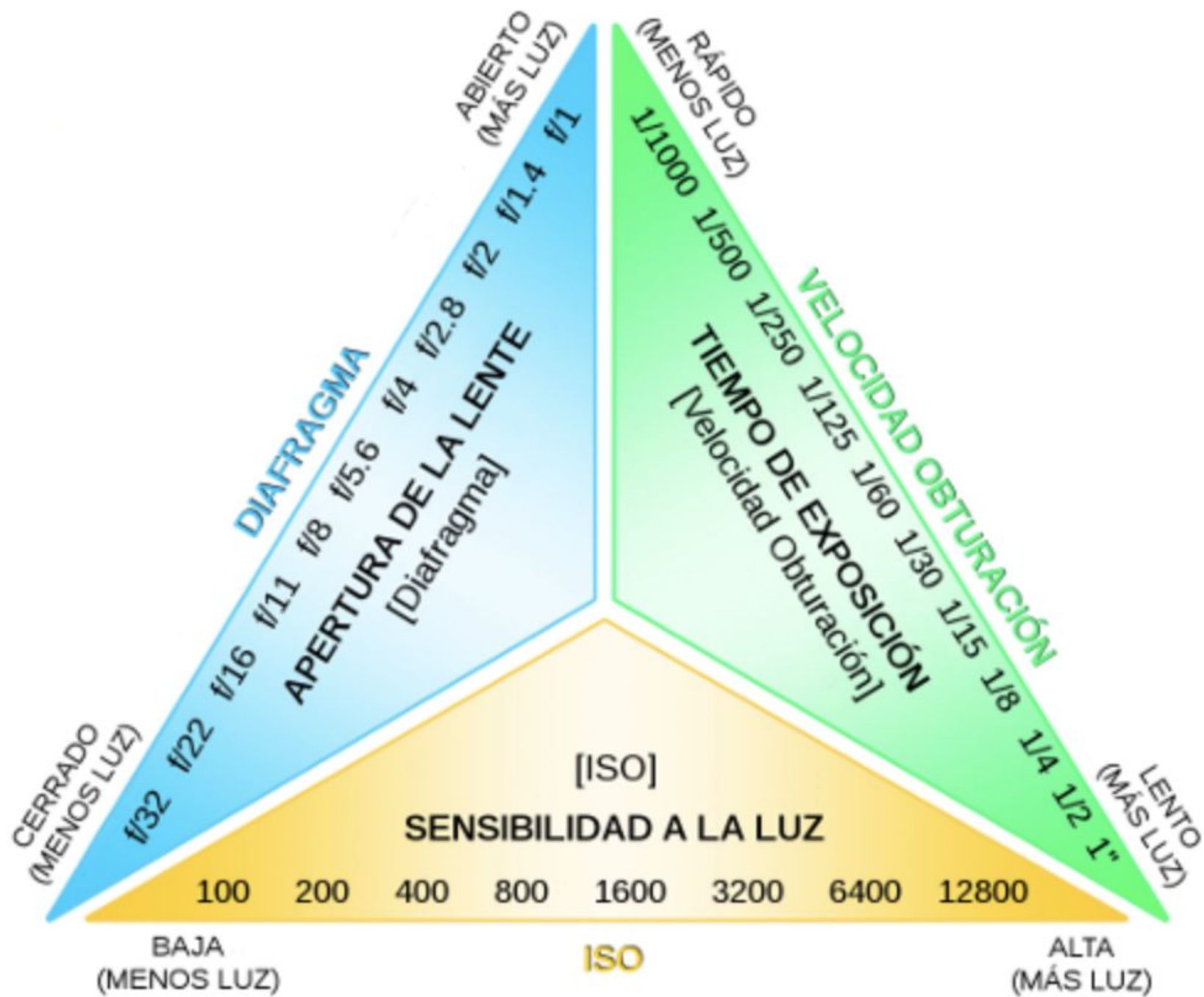
El exposímetro se acerca al "-"

A horizontal rectangular box containing a scale with three markers: a minus sign (-) on the left, a zero (0) in the center, and a plus sign (+) on the right. A vertical line representing the needle is positioned to the right of the zero mark, closer to the plus sign.

- . 0 . +

Sobreexposición:

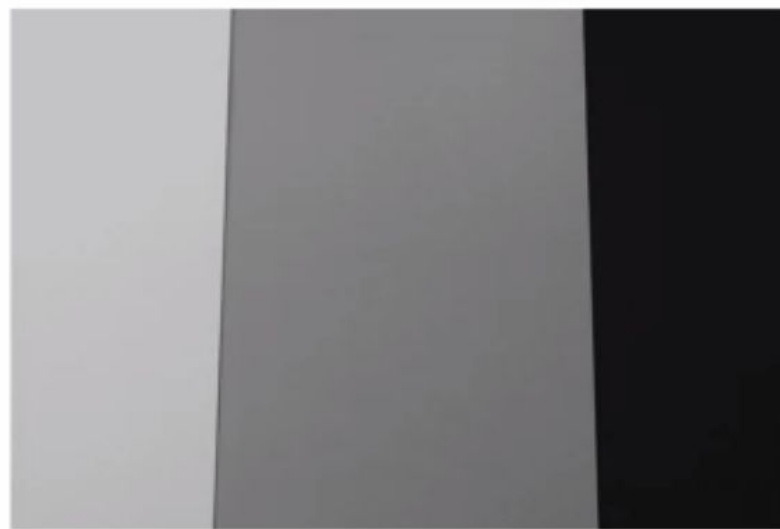
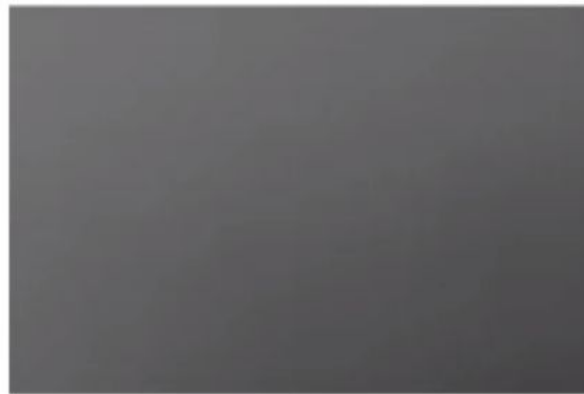
El exposímetro se acerca al "+"

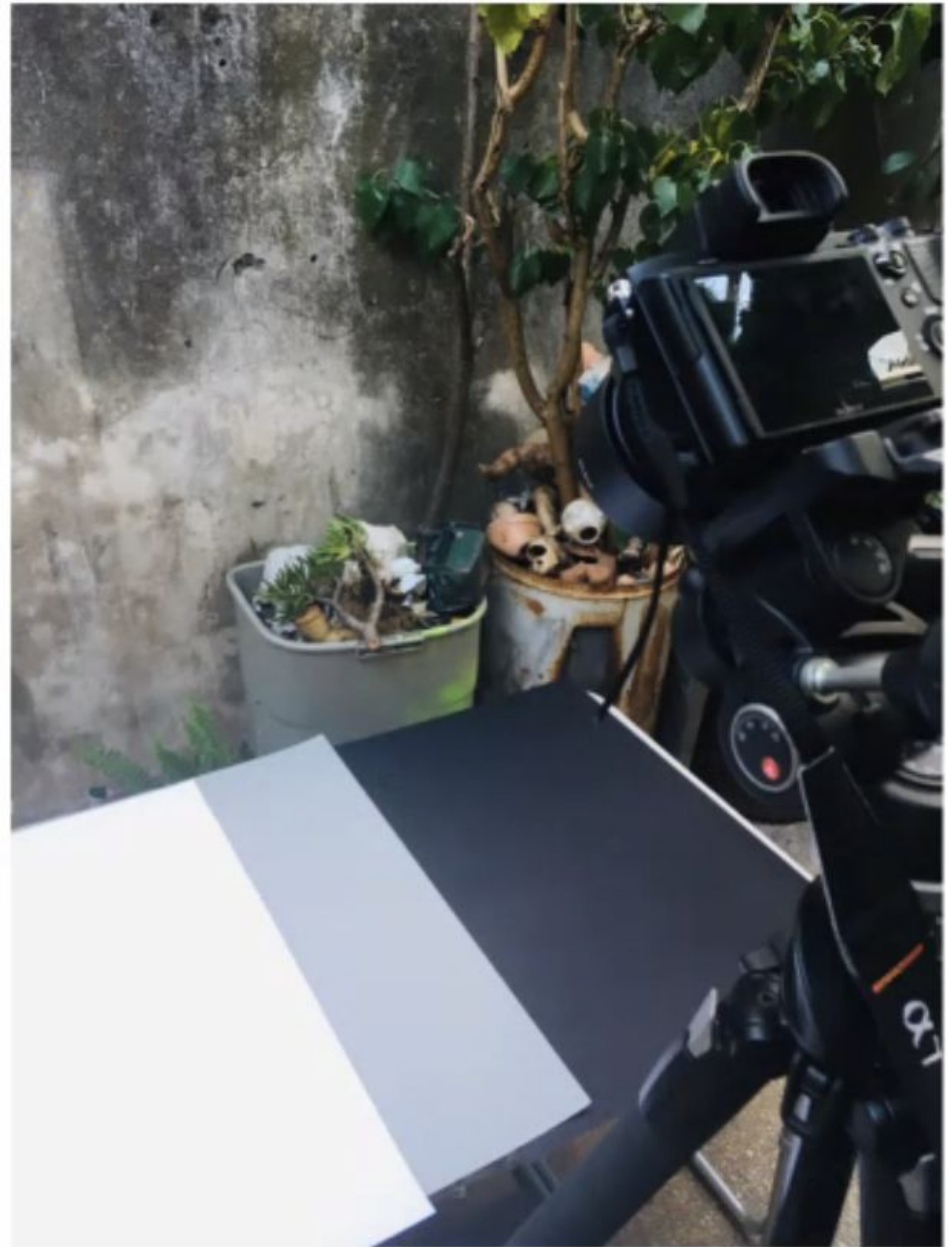




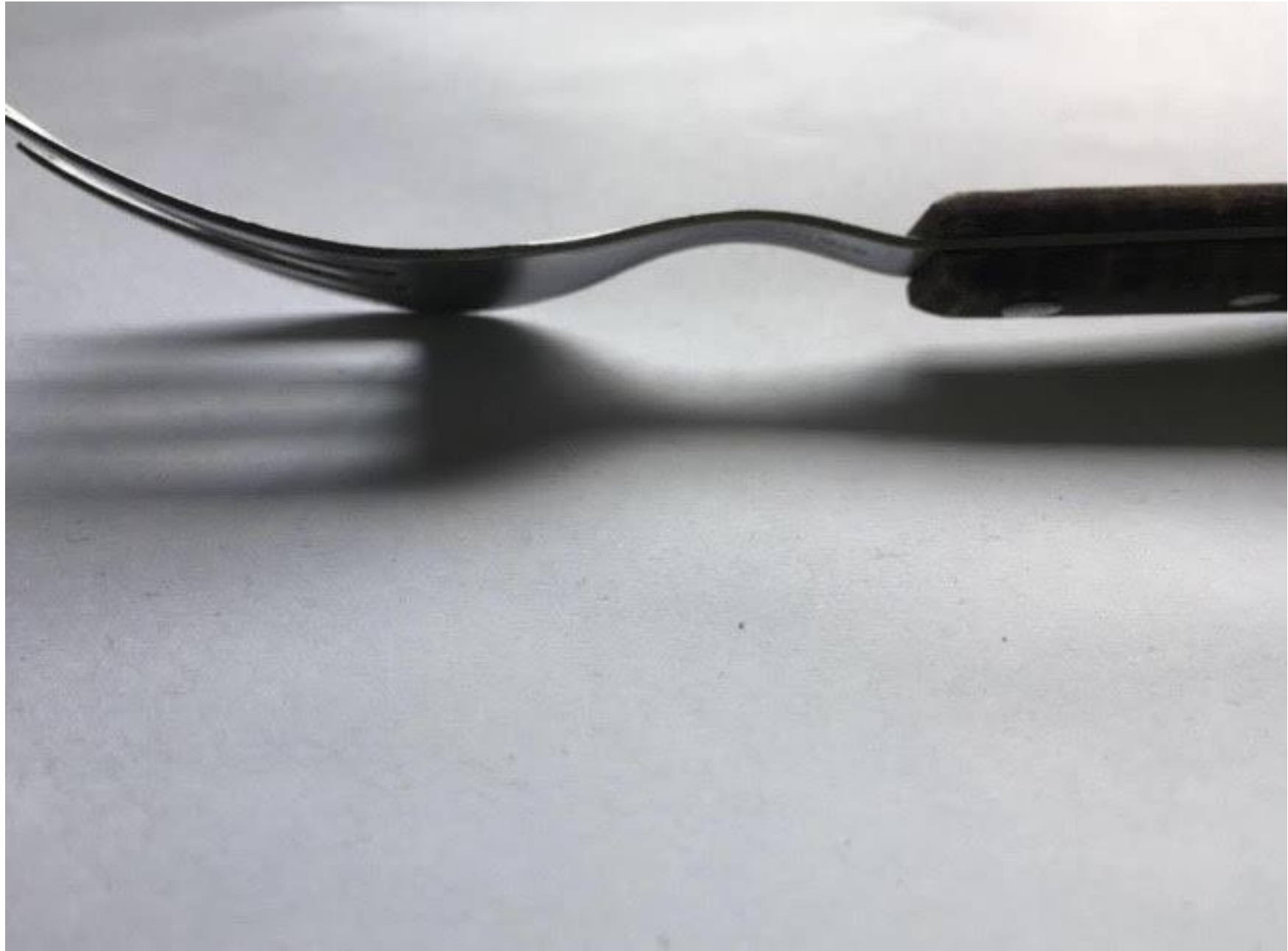


Cartulinas\_ prueba a la sombra\_







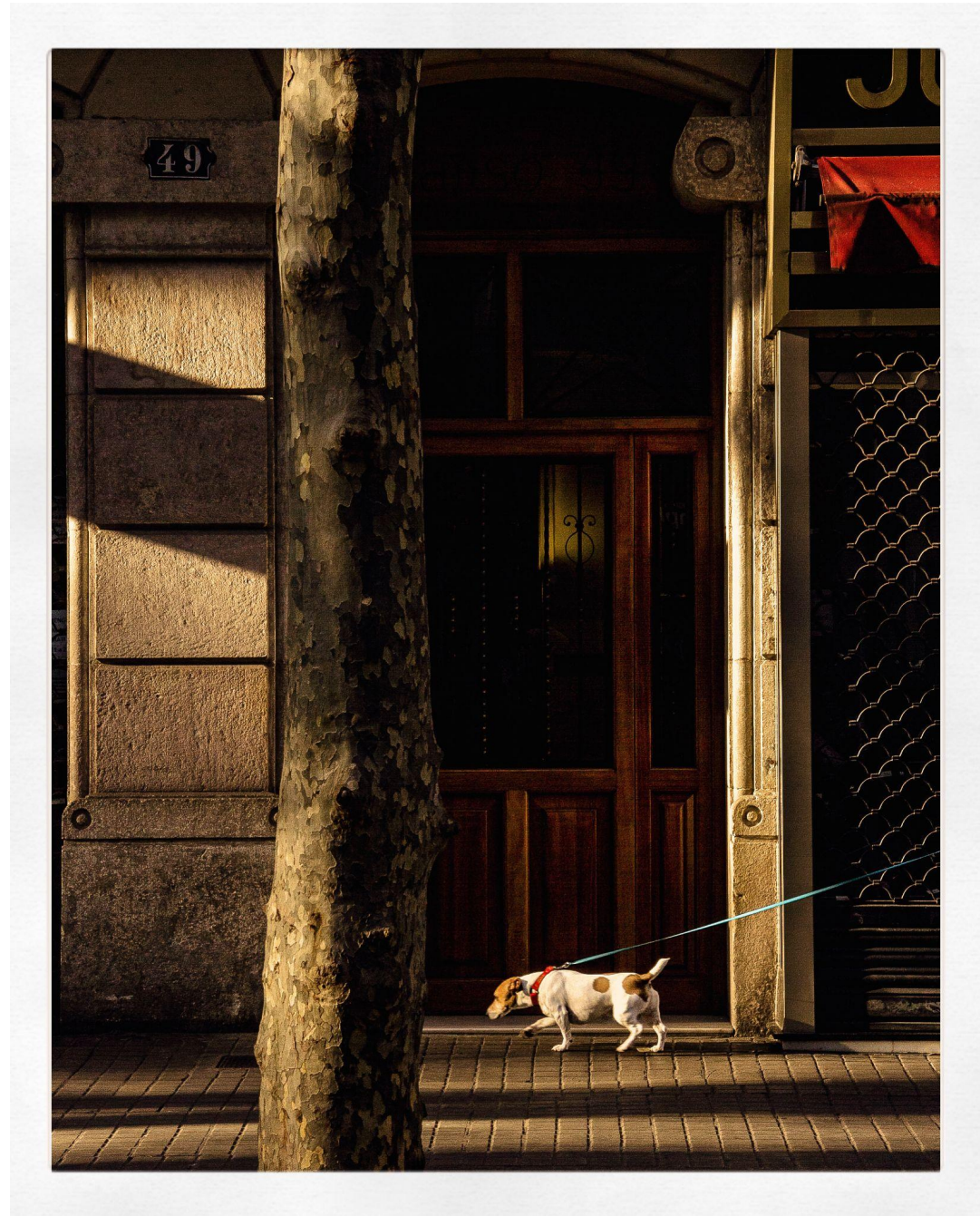


Romina Medina



Rodrigo Asillona





Susana Llamazales



# Partes del objetivo:



Anillo de enfoque



Anillo de enfoque

Anillo de diafragma



Anillo de enfoque

Anillo de zoom



Anillo de diafragma

f/1.4



f/2



f/2.8



f/4



f/5.6



f/8



f/11



f/16



Pasos o números F



